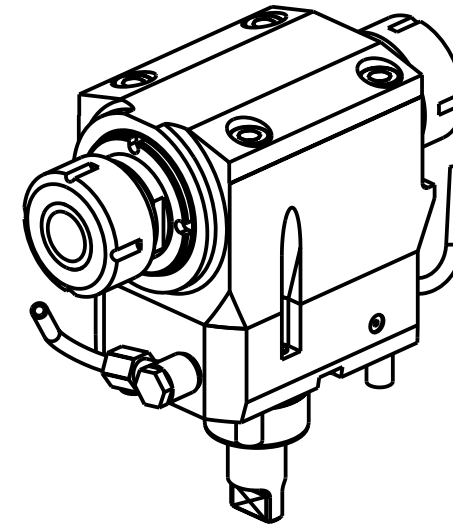
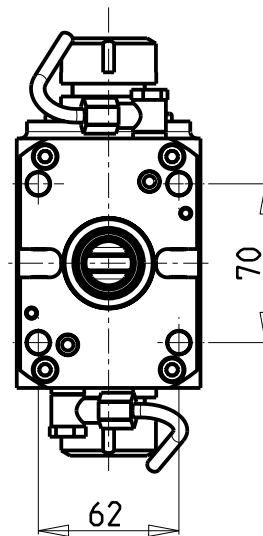
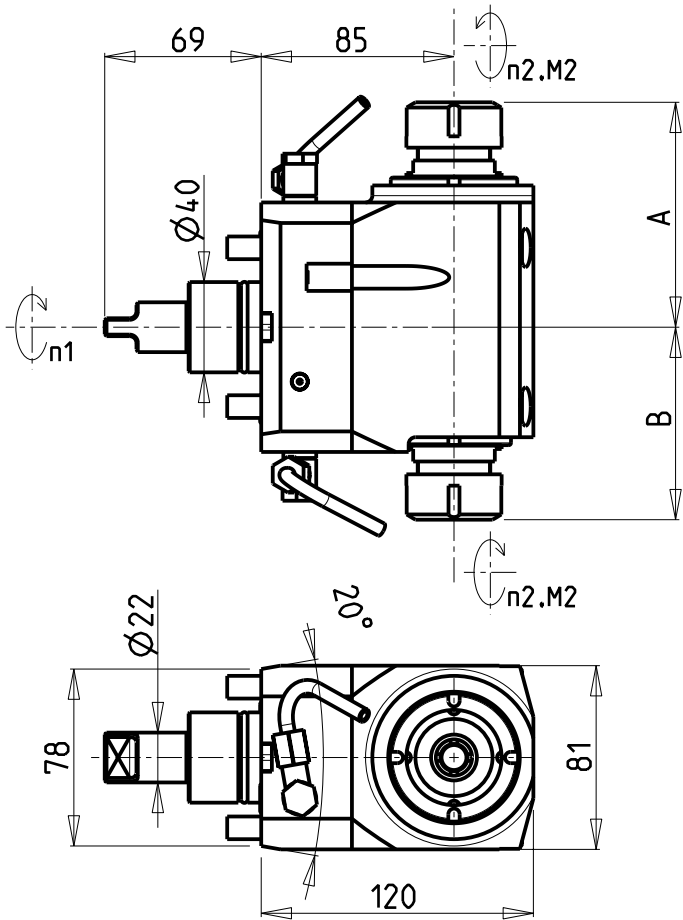


ATTENZIONE - ATTENTION - ACHTUNG

- Per lo smontaggio degli utensili utilizzare sempre la chiave di contrasto come indicato nel manuale d'uso.
- For disassembly of the tools use always the contrast key as mentioned in the user instructions.
- Fuer das Abmontieren der Werkzeuge immer den Gegenschlüssel benutzen wie in der Bedienungsanleitung erwaeht.



Cod. MT	Mandrino Spindle Spindel	I (n1:n2)	RPM max n2	Coppia Max Max Torque Max Drehmoment M2 (Nm)	Reversibile 180° 180° Reversible 180° umsetzbar	Lubr.esterna Ext. coolant Aussenkuehlung	Lav. secco Dry-run Trocken Bearb.	A	B	CHIAVI NON INCLUSE Keys not included Schluesssel nicht einbegriffen	
TKW 1130125	ER25+ER25	1:1	6000	40	X	X	X	99.16	85.16	CHUB36	CHSTER25
TKW 1130132	ER32+ER32	1:1	6000	40	X	X	X	102.16	87.86	CHUB36	CHSTER32

TAKISAWA
MOD: TM2000/3000 12ST. (2 KEYS TURRET)
MODULO MOTORIZZATO ASSIALE BISPORGENTE H=85mm
Axial opposite face twin driven tool H=85mm
Axial angetriebenes Werkzeug halb vorspringend H=85mm

M.T. srl
 Via Casino Albini 480
 Tel. 0541/956034-957884
 Fax 0541/956341
 47842 S. GIOVANNI IN M. (RN)
 e-mail: mtma@mtmarchetti.com
 http://www.mtmarchetti.com



TKW 240-9-10

Subject to change without notice.

09/2025