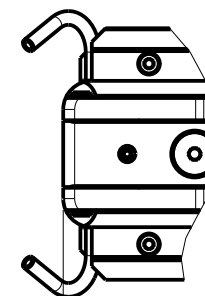
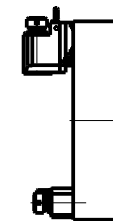
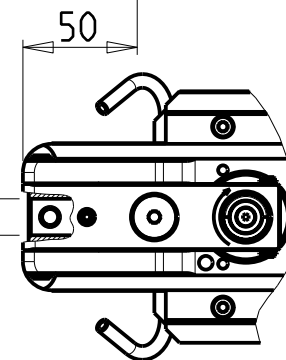


**TORRETTE ASSIALI  
AXIAL TURRETS  
AXIAL REVOLVER**



TOOL DIAMETER  
Ø16



**DOTAZIONI - SUPPLIED WITH - AUSSTATTUNG**

N°1 Boccola di riduz. Ø16-Ø12 e N°1 Boccola di riduz. Ø16-Ø10  
 N°1 Reduction bush Ø16-Ø12 and N°1 Reduction bush Ø16-Ø10  
 N°1 Reduzierbuchsen Ø16-Ø12 und N°1 Reduzierbuchsen Ø16-Ø10

PER UTENSILI STOZZATORI VEDI PAG. TBL400-1-00  
 FOR DRIVEN SLOTTING TOOL CUTTING-TOOLS SEE PAGE TBL400-1-00  
 FÜR NUTENSTOSS-WERKZEUG SCHNEIDWERKZEUGE SIEHE SEITE TBL400-1-00

Cod. MT	I	RPM max n1	Lubr. esterna Ext. coolant Aussenkuehlung	Lav. secco Dry-run Trocken Bearb.
SAU1012100	4:1	2000	X	-

**SAUTER  
VDI 40**

MODULO MOTORIZZATO STOZZATORE CORSA 50mm VDI40 DIN 5480  
 Slotting driven tool 50mm stroke VDI40 DIN 5480  
 Keilnutenstossmaschine 50mm Hub VDI40 DIN 5480

**M.T. srl**

Via Casino Albini 480  
 Tel. 0541/956034-957884  
 Fax 0541/956341  
 47842 S. GIOVANNI IN M. (RN)  
 e-mail: mtma@mtmarchetti.com  
 http://www.mtmarchetti.com



**SAU360-3-30**

Subject to change without notice.

09/2025