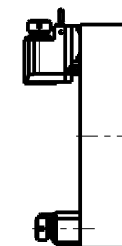


ATTENZIONE - ATTENTION - ACHTUNG

- Per lo smontaggio degli utensili utilizzare sempre la chiave di contrasto come indicato nel manuale d'uso.
- For disassembly of the tools use always the contrast key as mentioned in the user instructions.
- Fuer das Abmontieren der Werkzeuge immer den Gegenschlüssel benutzen wie in der Bedienungsanleitung erwaeht.

TORRETTE ASSIALI AXIAL TURRETS AXIAL REVOLVER



Cod. MT	Mandrino Spindle Spindel	I (n1:n2)	RPM max n2	Coppia Max Torque Max Drehmoment M2 (Nm)	Lubr.esterna Ext. coolant Aussenkuehlung	Lav. secco Dry-run Trocken Bearb.	A	A1	D	L	CHIAVI INCLUSE Keys included Schluessel inbegriffen	
OKU1450120	ER20	1:1	4000	40	X	X	85.16	-	-	-	CHUB36	CHSTER20
OKU1450125	ER25	1:1	4000	40	X	X	86.16	-	-	-	CHUB36	CHSTER25
OKU1450516	Ø16x17	1:1	4000	40	X	X	-	65	16	17	CHUB36	CH_VTCROCE_M08
OKU1450522	Ø22x19	1:1	4000	40	X	X	-	65	22	19	CHUB36	CH_VTCROCE_M10
OKU1450519	Ø3/4"x3/4"	1:1	4000	40	X	X	-	65	3/4"	3/4"	CHUB36	CH_VTCROCE_M08

OKUMA

MOD: LB15/300 - LT15/300 - LR15 - LU15M - LU300M - GENOS L300M - GENOS L3000e M/MY (VDI40) - ES L10M

MODULO MOTORIZZATO ORIENTABILE ±90° CON NONIO DIGITALE VDI40

±90° adjustable angle driven tool with digital display VDI40

Angetriebenes Werkzeug schwenkbar ±90° mit digital display VDI40

Subject to change without notice.

M.T. srl

Via Casino Albini 480
Tel. 0541/956034-957884
Fax 0541/956341
47842 S. GIOVANNI IN M. (RN)
e-mail: mtma@mtmarchetti.com
http://www.mtmarchetti.com



OKU333-2-01

09/2025