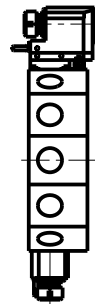
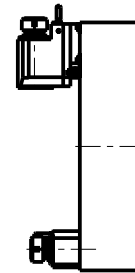


TORRETTE RADIALI
RADIAL TURRETS
RADIAL REVOLVER



TORRETTE ASSIALI
AXIAL TURRETS
AXIAL REVOLVER



PER PORTAUTENSILI MODULARI MTSK-32 VEDI PAG. TBL300-1-32
 FOR MTSK-32 QUIK CHANGE TOOLHOLDERS CLAMPINGS SEE PAGE TBL300-1-32
 FUER MTSK-32 MODULARE WERKZEUGAUFNAHMEN SIEHE SEITE TBL300-1-32

Cod. MT	Mandrino Spindle Spindel	I (n1:n2)	RPM max n2	Coppia Max Max Torque Max Drehmoment M2 (Nm)	Lubrificazione int. Coolant through Innenkuehlung Pmax (bar)	Lubr.esterna Ext. coolant Aussenkuehlung	Lav. secco Dry-run Trocken Bearb.	CHIAVI NON INCLUSE Keys not included Schluessel nicht einbegriffen	
OKU1930232	MTSK-32	1:1	6000	32	100 (diag. 1)	X	X	CHUB36	OKU0290009 *

- Chiave inclusa
- Key included
- Schluessel inbegriffen

OKUMA

MOD: LB200 - LT200 - GENOS L200M - GENOS L2000e M/MY - LT10M - ES L6 M - ES L811 M - LB10M - LR10M - LU200M

MODULO MOTORIZZATO ASSIALE MTSK VD130

Axial MTSK driven tool VD130

Axial MTSK angetriebenes Werkzeug VD130

Subject to change without notice.

M.T. srl

Via Casino Albini 480
 Tel. 0541/956034-957884
 Fax 0541/956341
 47842 S. GIOVANNI IN M. (RN)
 e-mail: mtma@mtmarchetti.com
 http://www.mtmarchetti.com



OKU014-1-00-K

09/2025