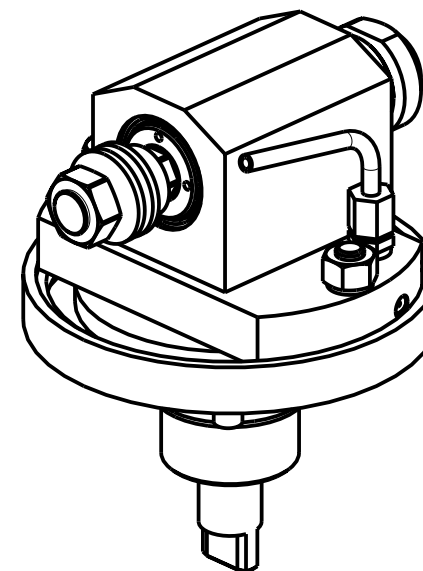
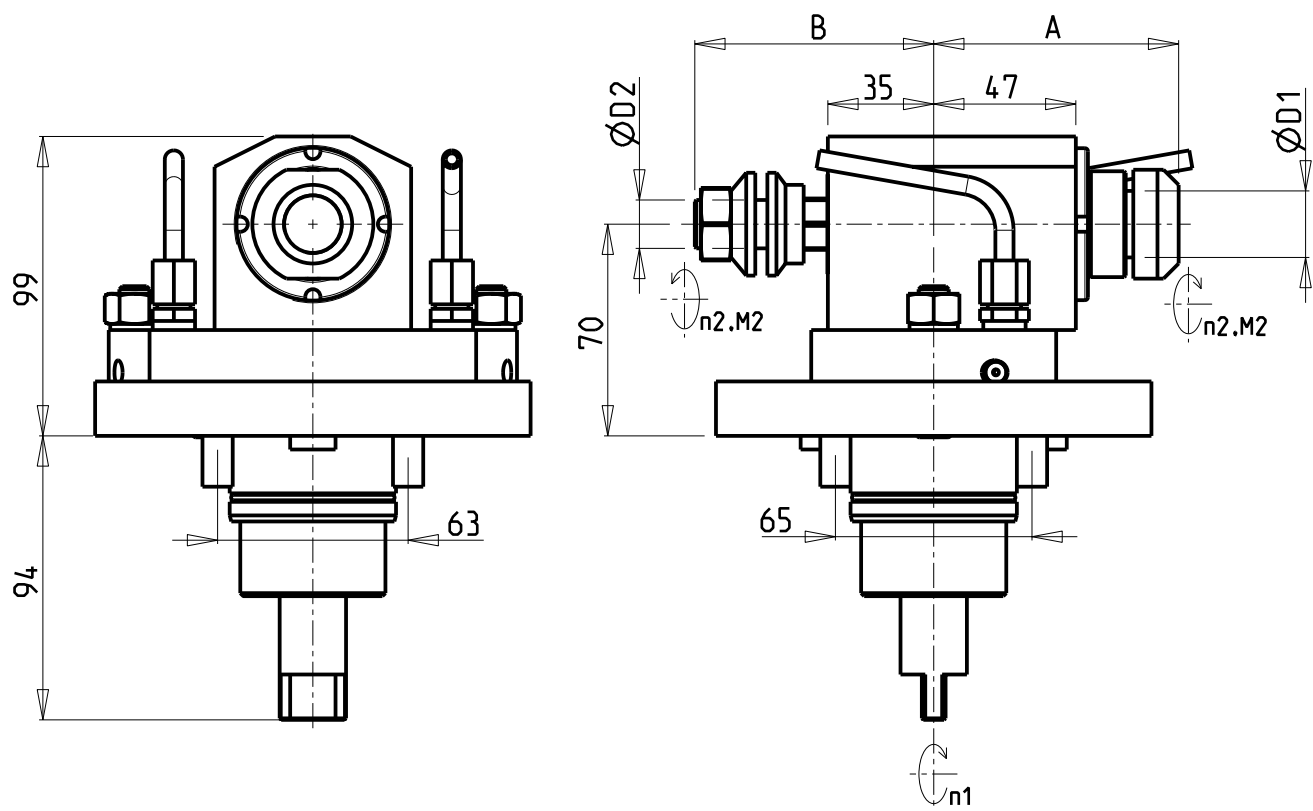


ATTENZIONE - ATTENTION - ACHTUNG

-Su macchine B545/550/565/446/465/745/765 non arriva in centro mandrino

-On machines B545/550/565/446/465/745/765 tool does not get to the centre of the spindle axis.

-Auf Maschinen B545/550/565/446/465/745/765 erreicht das Werkzeug nicht die Mitte der Werkzeug-Achse.



Cod. MT	Cod. BIGLIA	Mandrino Spindle Spindel	I (n1:n2)	RPM max n2	Coppia Max Max Drehmoment M2 (Nm)	Lubr.esterna Ext. coolant Aussenkuehlung	Lav. secco Dry-run Trocken Bearb.	A	B	D1	D2	NOTA Note Note	CHIAVI INCLUSE Keys included Schluessel inbegriffen		
0062216	-	Ø22+Ø16	1:1	6000	50	X	X	81	79	22	16	PORTAFRESA A DISCO MILLING CUTTER HOLDER DISK FLASHALTER	CHUB36	CHUB24+CHUB17	CHESL07
0060825	T134-00082	ER25	1:1	6000	50	X	X	80.16	-	-	-		CHUB36	CHSTER25	CHESL07
0062516	-	ER25+ER16	1:1	6000	50	X	X	80.16	66	-	-		CHUB36	CHSTER25+CHMNER16	CHESL07

BIGLIA
 MOD: B301/445/470/501(Y-S)/510/545/550/565/620/650/658/1200/446/465/745/765 - BMX 51/70Y2 15ST.

MODULO MOTORIZZATO ASSIALE ANGOLARE ±180°
 Axial ±180° adjustable angle driven tool
 Axial angetriebenes Werkzeug schwenkbar ±180°

Subject to change without notice.

M.T. srl
 Via Casino Albini 480
 Tel. 0541/956034-957884
 Fax 0541/956341
 47842 S. GIOVANNI IN M. (RN)
 e-mail: mtma@mtmarchetti.com
 http://www.mtmarchetti.com



BGL355-1-00